

PLAN

SHOWING SURVEY OF  
PART OF LOT 3  
CONCESSION 3  
TOWNSHIP OF THURLOW  
COUNTY OF HASTINGS

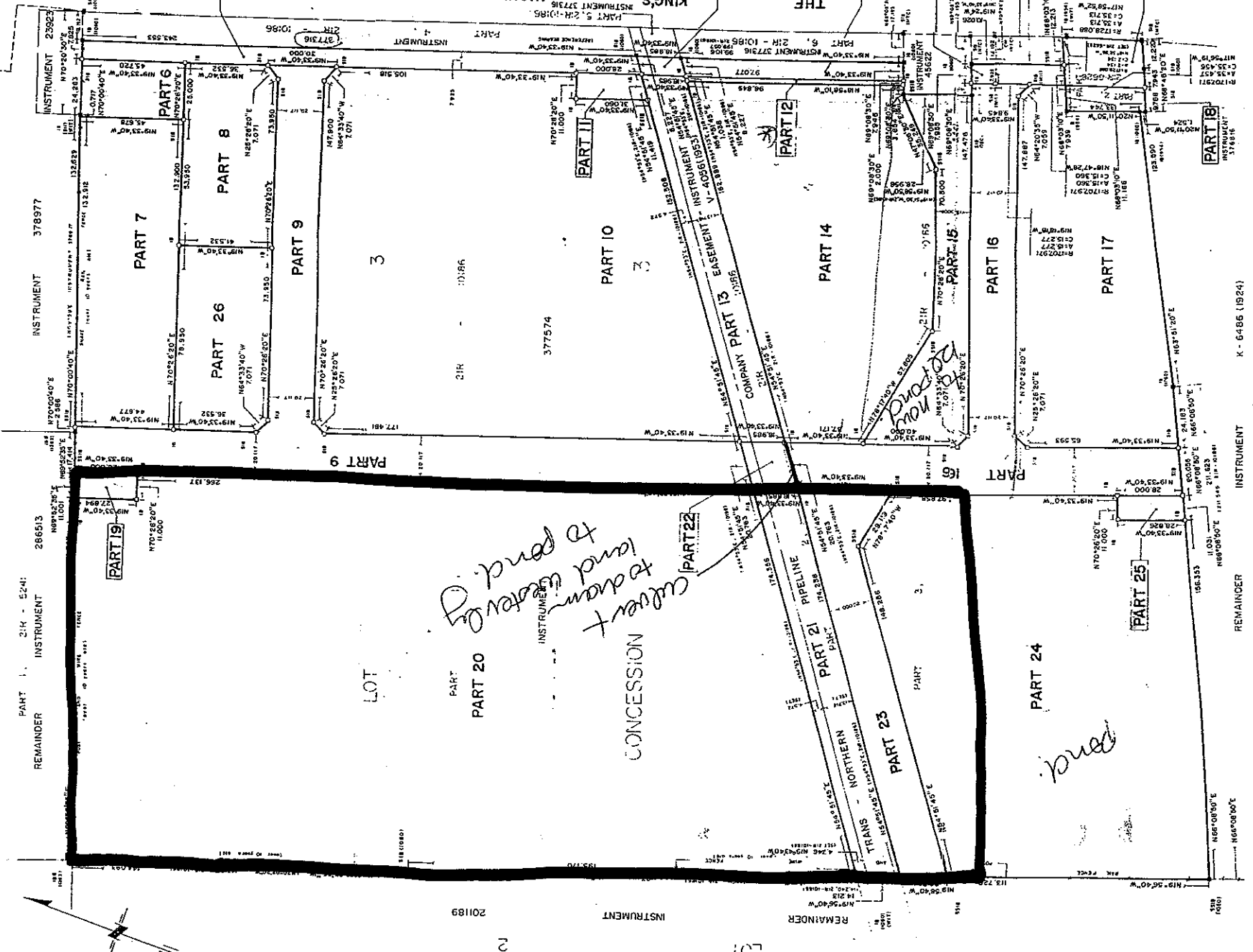
SCALE 1:1000  
WALTER I. WATSON O.L.S. 1988

METRIC: DISTANCES SHOWN ON THIS PLAN ARE IN METRES  
AND CAN BE CONVERTED TO FEET BY DIVIDING BY 0.3048.

REF	DESCRIPTION	INSTRUMENT	AREA	PART	DESCRIPTION	INSTRUMENT	AREA
1	PART OF LOT 3,	377574	1035.9 m <sup>2</sup>	14		377574	128881 m <sup>2</sup>
2	CONCESSION 3	377574	150.5 m <sup>2</sup>	15		377574	32415 m <sup>2</sup>
3		377574	772.4 m <sup>2</sup>	16		377574	8607.6 m <sup>2</sup>
4		377574	320.4 m <sup>2</sup>	17		377574	9422.0 m <sup>2</sup>
5		376816	715.9 m <sup>2</sup>	18		376816	371.8 m <sup>2</sup>
6		377574	1142.5 m <sup>2</sup>	19		377574	302.4 m <sup>2</sup>
7		377574	5003.9 m <sup>2</sup>	20		377574	137674 m <sup>2</sup>
8		377074	3296.4 m <sup>2</sup>	21		377074	137674 m <sup>2</sup>
9		377574	5036.7 m <sup>2</sup>	22		377574	13187.7 m <sup>2</sup>
10		377574	24993.8 m <sup>2</sup>	23		377574	17472.7 m <sup>2</sup>
11		377574	324.9 m <sup>2</sup>	24		377574	1787.7 m <sup>2</sup>
12		377574	44.8 m <sup>2</sup>	25		377574	2191.1 m <sup>2</sup>
13		377574	26935.6 m <sup>2</sup>	26		377574	3236.4 m <sup>2</sup>

RECEIVED AND DEPOSITED  
ON 22 OCTOBER 1988  
FOR THE REGISTER  
DIVISION OF HASTINGS  
UNDER THE REGISTRY ACT.  
WALTER I. WATSON  
ONONDAG LAND SURVEYOR  
OCTOBER 29, 1988  
THIS IS NOT A PLAN OF SUBDIVISION  
AS WITHIN THE MEANING OF THE PLANNING  
ACT

ROAD ALLOWANCE BETWEEN  
CONCESSIONS 3 AND 4  
NEAREST CORNER  
LOT 3, CONCESSION 3  
RECORD THIS PLAN TO BE DEPOSITED  
FOR THE REGISTER  
DIVISION OF HASTINGS  
UNDER THE REGISTRY ACT.  
WALTER I. WATSON  
ONONDAG LAND SURVEYOR  
OCTOBER 29, 1988



NOTES:  
BEARINGS ARE ASTROMETRIC DERIVED FROM THE WEST LIMIT OF PART 4, PLAN 21R-10186  
(shown as reference bearing on this plan), N19°33'40" W.

SURVEYOR'S CERTIFICATE  
I CERTIFY THAT  
1 THIS SURVEY AND PLAN ARE CORRECT AND IN ACCORDANCE WITH THE SURVEY ACT  
AND THE REGISTRY ACT AND THE REGULATIONS MADE THEREUNDER  
2 THE SURVEY WAS COMPLETED ON THE 22nd DAY OF DECEMBER, 1988  
DECEMBER 23, 1988  
Walter I. Watson  
ONONDAG LAND SURVEYOR

LEGEND:  
□ CONCRETE POND  
▣ PLANNED  
▤ SHORT STANDARD IRON BAR  
▥ ROAD IRON BAR  
▧ MINISTRY OF TRANSPORTATION  
▨ ORIGINAL SURVEYING  
▩ ORIGINAL MONUMENT  
○ CH  
○ WI

Walter I. Watson Limited  
Ontario Land Surveyor  
218 Church Street  
Bellefleur, Ontario  
K8N-3C3 (613) 962-9981

PROJECT N° 9769 - N - 88