

VII

CONCESSION

VII

CONCESSION

CONCESSION VI

LOT 26

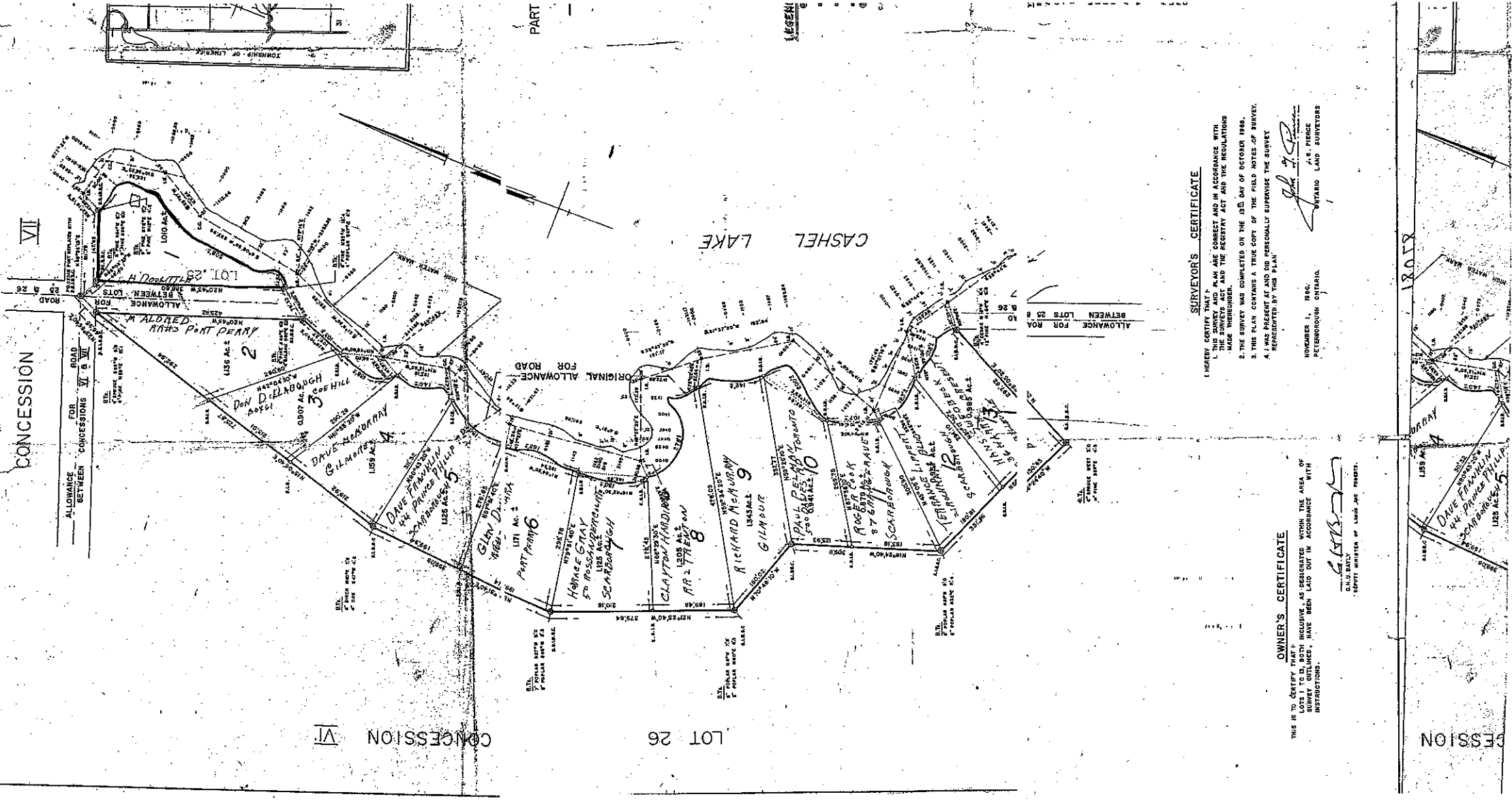
CONCESSION

12012

PART

LEGEND

CASHEL LAKE



**SURVEYOR'S CERTIFICATE**

1. THESE COPIES OF THIS PLAN ARE CORRECT AND IN ACCORDANCE WITH THE SURVEY ACT AND THE REGISTRY ACT AND THE REGULATIONS MADE THEREUNDER.
2. THE SURVEY WAS COMPLETED ON THE 13th DAY OF OCTOBER 1966.
3. THIS PLAN CONTAINS A TRUE COPY OF THE FIELD NOTES OF SURVEY.
4. I WAS PRESENT AT AND DID PERSONALLY SUPERVISE THE SURVEY REPRESENTED BY THIS PLAN.

NOVEMBER 11, 1966.  
 PETERBOROUGH, ONTARIO.  
 J. G. PIERCE  
 ONTARIO LAND SURVEYORS

**OWNER'S CERTIFICATE**

THIS IS TO CERTIFY THAT THE LOTS 1 TO 12, BOTH INCLUSIVE, AS DESIGNATED WITHIN THE AREA OF SURVEY OUTLINED, HAVE BEEN LAID OUT IN ACCORDANCE WITH INSTRUCTIONS.

GILMORE  
 COUNTY MINISTER OF LANDS AND FORESTRY