

SURVEYOR'S REAL PROPERTY REPORT
"PART B"

(READ IN CONJUNCTION WITH PART A)

This Report Prepared for Gail and Adrian Bax.

Description of Land : Part of Lot 63
Concession 1
Township of Ameliasburgh
Now in the Municipality of
The County of Prince Edward
Parts 3 , Plan 47R-2182

Easements / Right-of Ways : Subject to Easement EC 2986 over Part 1, 47R-8120.

Encroachments : None.

Compliance with Municipal By-Laws : Not certified by this report.

Additional Remarks : This Report to be read in conjunction with Part A, Plan of Survey.
Location of under-ground services not verified by this report.

Project No. 5214-B-07

(Date) May 30, 2008

(Signed) 
Keith Watson
Ontario Land Surveyor

WATSON
LAND SURVEYORS Ltd.

218 Church Street,
Belleville, Ontario K8N 3C3

Telephone 613-962-9521
Fax 613-962-8729

SURVEYOR'S REAL PROPERTY REPORT
 PART A
PLAN OF SURVEY
 PART OF LOT 63
 CONCESSION 1
 TOWNSHIP OF AMELIASBURGH
 NOW IN THE MUNICIPALITY OF
 THE COUNTY OF PRINCE EDWARD.

UNPATENTED LAND

BAY OF QUINTE

IMPERIAL SCALE 1" = 40'



KEITH WATSON O.L.S.

IMPERIAL :

DISTANCES SHOWN ON THIS PLAN ARE
 IN FEET AND CAN BE CONVERTED TO
 METRES BY MULTIPLYING BY 0.3048.

LOT

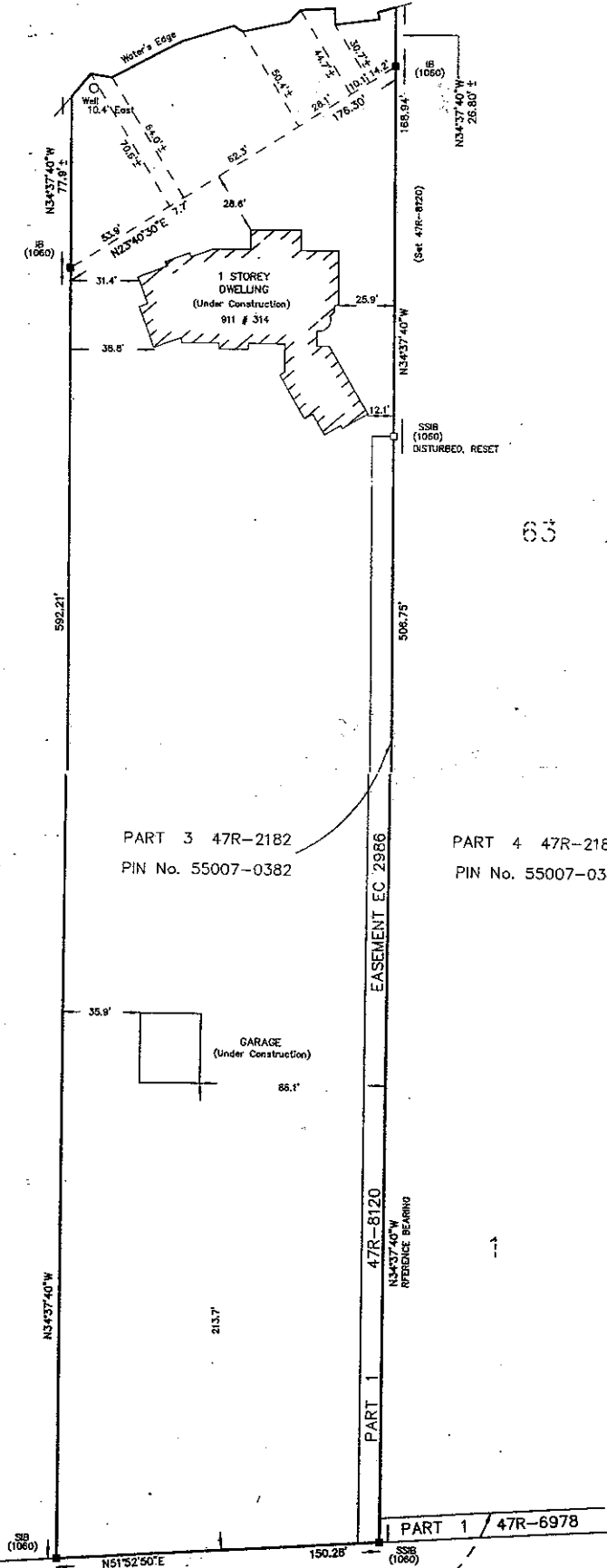
63

PART 2 47R-2182
 PIN No. 55007-0380

PART 3 47R-2182
 PIN No. 55007-0382

PART 4 47R-2182
 PIN No. 55007-0381

CONCESSION



COUNTY ROAD No. 3 (TRAVELLED)

PIN No. 55007-0414